

# GILGEN SLX-M SLIDING DOOR DRIVE UNIT, COMBINED WITH PSXP PROFILE SYSTEM

## The ideal combination for a wide range of applications

The Gilgen SLX-M sliding door drive unit is a universally applicable drive system with state-of-the-art functions. It is designed to offer guaranteed, reliable functioning in a wide range of highly-demanding applications. The elegantly-designed sensor system is built into the header profile.

### Versatile usage

- The ideal combination for a wide range of uses
- The vertically interlocking configuration of the door leaves offers guaranteed robustness and protection from draughts
- A robust, elegantly-designed door (ideal for large facades)
- Reliable, long-term operation
- Fully-tested system (conforming to DIN 18650, etc.)

### Possible applications

- Single and bi-parting sliding doors
- Emergency-exit function (redundant configuration)
- With side panels
- With glazed overhead panel
- With pocket screen
- Ideal for buildings with high levels of pedestrian traffic (such as supermarkets, railway stations, airports, hospitals, etc.)
- Standard locking-system built into drive mechanism
- FLUVERI multi-point locking (integrated into door leaf) manual/automatic
- With floor lock
- Flush bottom guide rail or fixed point guide
- Can be attached to the door lintel or wall
- Self-supporting, with pillar reinforcement

### Glazing and infill options

- Safety glass ESG / VSG
- Insulating glass
- Glass thickness: 6 to 24 mm
- Infill's made of plastic, aluminium and wood

### Surface finish of aluminium profiles

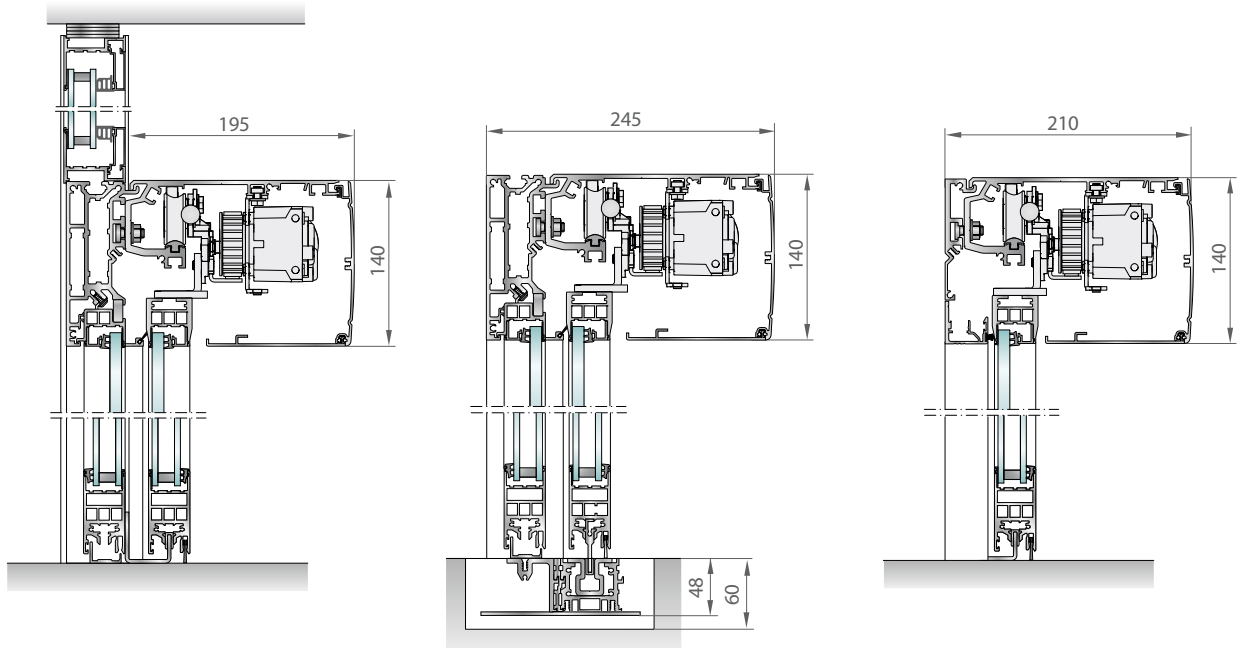
- Anodised (coloured or colourless)
- RAL colours, Polyester powder coating (PPC)



A combination of Gilgen SLX-M drive unit and PSXP profile system provides a complete system that is both versatile and robust



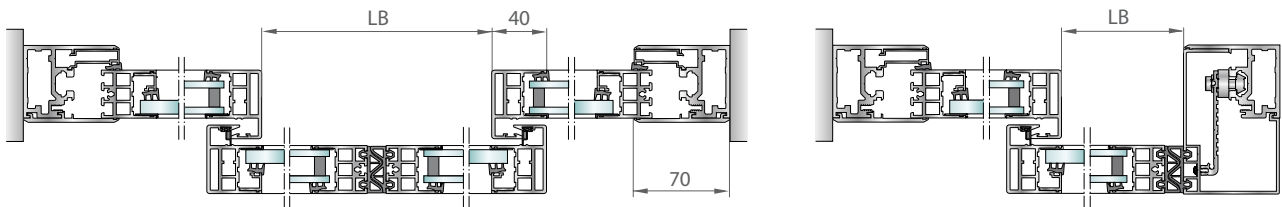
**Gilgen SLX-M sliding door drive unit, combined with the PSXP profile system**



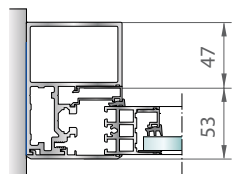
Robust self supporting construction with optional glazed overhead panel for free standing drive system installation and easy integration into existing facades.

Single and bi-parting systems with side panel and bottom guide rail

Single and bi-parting systems without side panel, but with fixed point guide



Jamb standard



Jamb reinforced

**Range of application for Gilgen SLX-M sliding door drive unit with PSXP profile system**

		Bi-parting	Single door leaf
Sliding door SLX-M	Clear opening width	800 - 3000 mm	700 - 2000 mm
	Max. door leaf weight	2 x 150 kg	150 kg
	Clear height	standard 2100 mm / possible up to 3000 mm	
SLX-M redundant	Clear opening width	1000 - 3000 mm	1050 - 2000 mm
	Max. door leaf weight	2 x 150 kg	150 kg
	Clear height	standard 2100 mm / possible up to 3000 mm	